

PRO)))SOUND™

Soundproofing Systems

THE REDUCTOCLIP™ SYSTEM TV AND RADIATOR GUIDE

Creating Peace and Quiet In Your Home

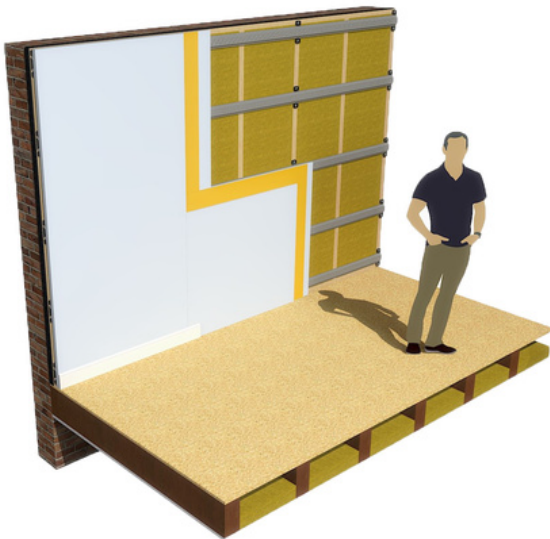
ATTACHING A TV TO THE SOUNDPROOFED WALL



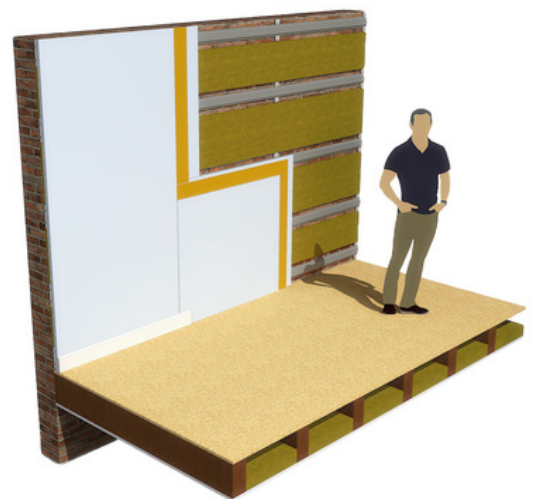
When installing a TV or radiator on either the ReductoClip Direct to Wall or ReductoClip Independent Wall System, it is important to use suitable fixings. With suitable fixings most TV's and radiators can be installed directly onto the finished system.

For extra reassurance, then a solution of extra clips and furring channels can be utilised (detailed in this guide).

n.b. The ReductoClips are designed to carry the weight of the T.V. and bracket (not exceeding a combined weight of 60kg).



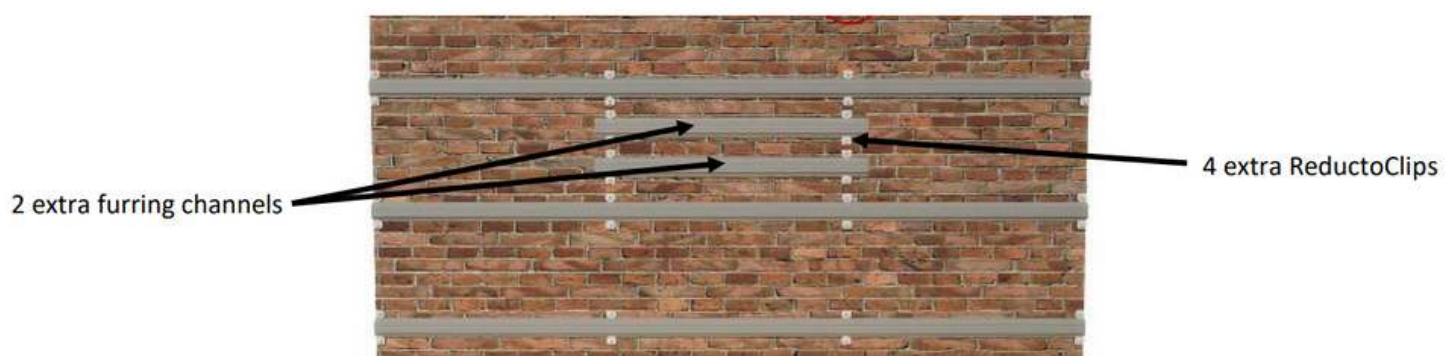
ReductoClip Independent
Wall System



ReductoClip Direct to Wall
System

TV INSTALLATION FOR THE REDUCTOCLIP DIRECT TO WALL SYSTEM

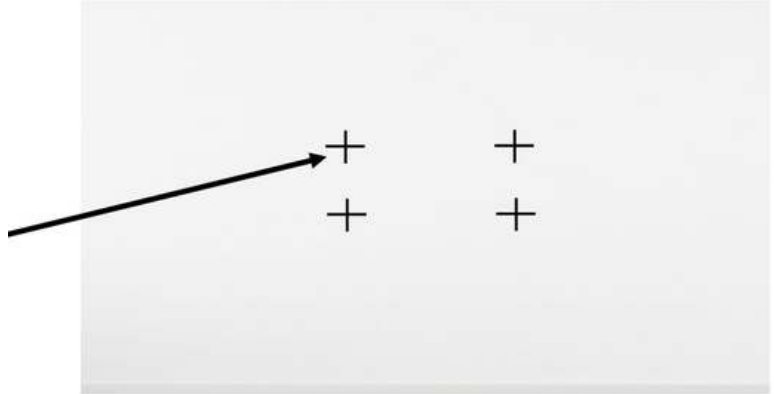
Install two extra horizontal furring channels between the two standard furring channels to accommodate the TV wall mount. Make a note of the location of your two extra furring channels by marking on the returning walls and the ceiling so that they are easily identifiable, (As further in the installation process they will be concealed with the plasterboard and TecSound layers).



Once the two extra furring channels and four extra ReductoClips have been installed, proceed with fixing on the two layers of acoustic plasterboard with TecSound sandwiched in between (following the ReductoClip Direct to Wall System installation instructions).

TV INSTALLATION FOR THE REDUCTOCLIP DIRECT TO WALL SYSTEM

Mark on the plasterboard the positions of the furring channels so you can locate where you need to fix into.



When the final layers of the system have all been completed, hold up the wall mount and position this in accordance with the concealed furring channels. Then fix the wall mount into these channels using stainless steel self drilling screws, ensuring a strong secure connection.

Fix the Wall mount through the plasterboard layers into the furring channels using the appropriate fixings.

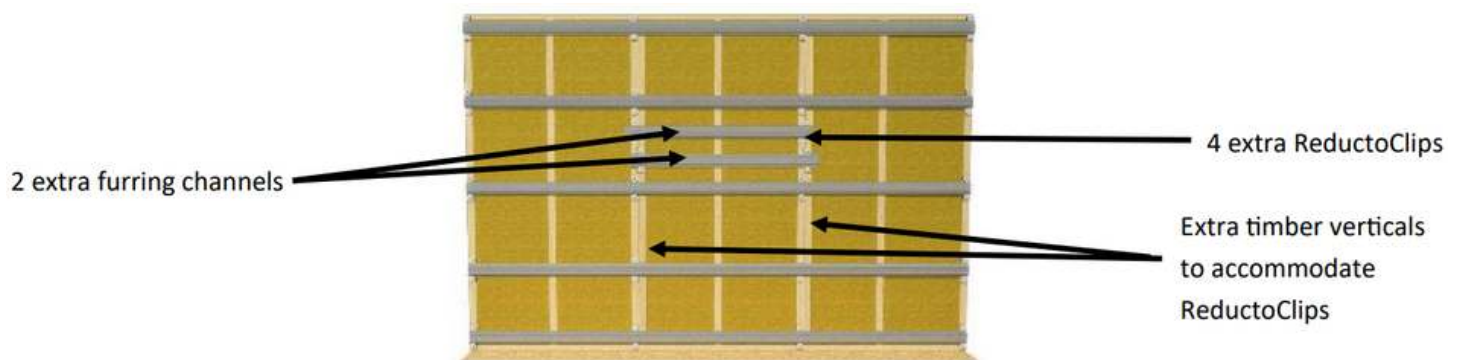


TV INSTALLATION FOR THE REDUCTOCLIP INDEPENDENT WALL SYSTEM

Install two extra horizontal furring channels between the two standard furring channels to accommodate the TV wall mount.

If there is limited space there may be a need to offset the ReductoClips as shown by adding an extra two timber verticals as fixing points.

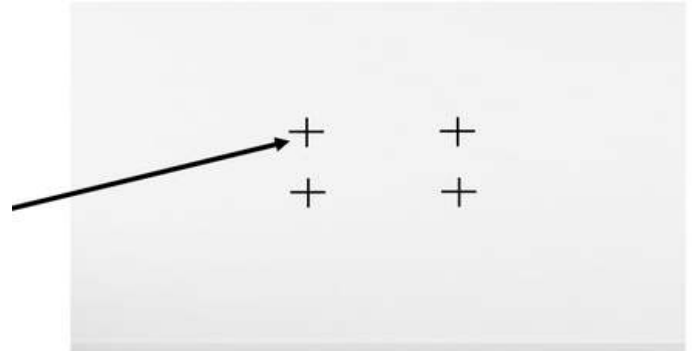
Make a note of the location of your two extra furring channels by marking on the returning walls and the ceiling so that they are easily identifiable, (As further in the process, they will be concealed with the plasterboard and TecSound layers).



Once the extra two furring channels and extra four ReductoClips have been installed, proceed with installing the two layers of acoustic plasterboard with TecSound sandwiched in between (following the ReductoClip Independent System installation instructions),

TV INSTALLATION FOR THE REDUCTOCLIP INDEPENDENT WALL SYSTEM

Mark on the Plasterboard the positions of the furring channels so you can locate where you need to fix into.



When the final layers of the system have all been completed, please hold up the wall mount and position this in accordance with the concealed furring channels. Then fix the wall mount into these channels using stainless steel self drilling screws, ensuring a strong secure connection.

Fix the Wall mount through the plasterboard layers into the furring channels using the appropriate fixings



The television can now be fixed onto the wall mount system using the fixing kit provided by the manufacturer. If you are planning on installing a soundbar below your TV then the same process applies (however, using just one furring channel with two ReductoClips).



The same process can be used if you are looking to install a radiator system on the wall (using two extra horizontal furring channels).

